



All About Pi

Data Centers & Offices:

Vijayawada | Hyderabad | Kochi | Mumbai | Chennai | Delhi | Bengaluru



www.pidatacenters.com | www.picloud.ai





About Pi

Pi DATACENTERS® is a story envisioned by technocrats, led by its Founder & CEO, Mr. Kalyan Muppaneni. The vision was to redefine the customer experience while fuelling the customer's business growth. This was backed by the mission to introduce Hyperscale data centers & indigenous enterprise cloud to the Indian industry with intelligent and self-healing infrastructure.

With a cumulative capacity of 500.000 sq ft of built-up area and 60 MW of power, including a dedicated in-house substation, Pi is by far India's first Greenfield and World's 4th largest Uptime Institute TIER IV Certified Datacenter, along with being one of the leading service providers of Multi-Cloud, AI & Managed Services. Pi is headquartered in Hyderabad (Telangana, India) and operates out of its data centers and cloud points of presence across Vijayawada (AP), Hyderabad, Kochi, Mumbai, California (US- West Coast) & Pennsylvania (US – East Coast).

The objective is to differentiate with high-quality and high-performance data center, Cloud, and AI services that are scalable and run on reliable multi-cloud ecosystems, along with an extensive managed services overlay portfolio. All of these while maintaining optimal TCO in supporting businesses for Indian and global enterprises operating in India.

Pi is certified to cater to enterprises for their Oracle, AWS, Azure, and GCP, as well as for SAP HANA operations, SAP Infrastructure and Cloud Operations, and SAP Hosting Operations. This enables digital transformation across enterprises for the smooth and secure operation of business-critical processes.

Pi also brings in a pivotal framework at the intersection of AI and Cloud Computing. It represents a paradigm shift in the world of digital technology. In the high-end computing and advanced technology industry, Pi Cloud.ai is in charge of transforming possibilities. We simplify the complex and reshape the computing landscape through integrated, high-performance infrastructure.



Pi Datacenters Services for Enterprises

Advisory

When embarking on the journey of establishing a data center, obtaining precise guidance is paramount. Pi Datacenters, renowned for its expertise, assists in every phase, from selecting the optimal location to sizing capacity to meet present and future needs. Pi's proficient team deciphers your unique requirements, providing a comprehensive assessment and cost projection. Properly sizing the data center is pivotal for cost control. Expert advice on power, cooling, and other vital electrical and mechanical aspects is pivotal. This guidance extends to crucial details such as Construction Area, Compartmentalization, and Load-bearing Capacity.



Seismic Zone Category



History of Natural Calamities



Fiber Connectivity



Power



Water Supply



Ease of Regulatory Approvals

Colocation Services

Private Suites



Introducing an innovative modular concept, Pi Datacenters offers distinct private suites akin to data centers within a data center. These segregated suites cater to the stringent compliance and substantial colocation needs of enterprises. Meticulously designed, these private suites accommodate varying quantities of racks, diverse power capacities, critical operations, and security prerequisites.

Whitespace



Pi Datacenters presents advanced, plug-and-play-equipped, state-of-the-art spaces, precisely tailored to meet customers' specific deployment requirements for their cabinets and IT equipment.

Caged Solution



For enterprises seeking versatile alternatives while retaining absolute control over their environment, encompassing environmental conditions and security protocols, Pi Datacenters, introduces the Caged Solution.

Rack Colocation



Elevating security, Pi Datacenters delivers lockable rack cabinets replete with power and high-speed network connectivity. These cabinets find their place within modular data suites of assorted dimensions enabling the concurrent co-location of computing, storage, and network devices. The dedicated air conditioning within these data suites ensures optimal conditions. Available as part of dedicated or shared suites, these digitally fortified cabinets cater to varying customer demands.

Sub-Cabinet Services



Tailored for enterprises requiring shared rack utilization to co-locate a few IT appliances on a "Per U" basis, Pi Datacenters Sub-Cabinet Services offer the advantage of a fully redundant data center environment. Supported by independent N+N power and cable feeds, this option is ideal for those starting small with the flexibility to scale at will.

Hands and Feet Support



Incorporating a valuable facet, Pi Datacenters extends its Hands and Feet Support to assist customers in preliminary physical assessments of their hosted environment. This includes port and cabling checks, monitoring equipment indicators, and on-demand physical reboots. Particularly beneficial for customers lacking an on-site presence, this service serves as a pivotal extension of support within the data center landscape.



reachus@pidatacenters.com | reachus@picloud.ai



www.pidatacenters.com | www.picloud.ai



8712630334



[/PIDATACENTERS](#)



[/company/PIDATACENTERS](#)



[PI_DATACENTERS](#) (Twitter)



Operational Excellence

Pi Datacenters leverages vast operational experience to serve enterprises and governmental bodies of all sizes. Their comprehensive framework ensures smooth data center functionality, covering everything from network resource establishment to power and cooling monitoring. Amid diverse IT needs and cloud-driven changes, Pi's proficiency ensures uninterrupted operations.

As skilled data center operators, Pi Datacenters enhance efficiency. With a proven track record, they're your trusted partner for proficient data center management.

Benefits Of Pi Datacenters Services

Advisory



- **Precision-Driven Guidance:** Unparalleled expertise guides your data center journey.
- **Future-Ready Capacity Sizing:** Scalability that anticipates and meets your growth.
- **Cost Projection Mastery:** Expert assessment for cost-effective planning.
- **Pivotal Power and Cooling Advice:** Crucial insights for optimal efficiency.
- **Comprehensive Design Consideration:** From construction area to load-bearing capacity.

Operational Excellence



- **Seasoned Operational Prowess:** Vast experience that ensures uninterrupted function.
- **Network Resources Mastery:** Establishing and maintaining network excellence.
- **Vigilant Power and Cooling Oversight:** Continuous monitoring for peak performance.
- **Agility in Evolving Landscapes:** Adaptation in the face of cloud-driven change.
- **Management Proficiency:** Data center efficiency brought to its zenith.
- **Trusted Partnership for Success:** Dedicated management of your critical environment.

Colocation



- **Modular Architecture:** The modular suite transcends single-use paradigms, seamlessly accommodate multi-tenancy configurations.
- **SCADA/DCIM:** Fully automated SCADA/DCIM facility encompasses a system that oversees live monitoring and instantaneous control.
- **Uncompromised Security:** An intricate security infrastructure comprising eight rigorous tiers, spanning from the entrance to the data racks.
- **Dedicated NOCs:** Exclusive platform for enterprises to exercise precise control over their network, systems, applications, and security.
- **Rapid Deployment:** Plug-And-Play private suites enable customers to quickly colocate their IT infrastructure.
- **Low Total Cost-Of-Ownership:** Being pioneers of data center design, optimized Power Usage Effectiveness (PUE), and more help us deliver substantial cost savings.



reachus@pidatacenters.com | reachus@picloud.ai



www.pidatacenters.com | www.picloud.ai



8712630334



/PIDATACENTERS



/company/PIDATACENTERS



PI_DATACENTERS (Twitter)



Data Center Locations

Vijayawada Andhra Pradesh



Uptime Institute Tier IV Certified (99.995% uptime) Built on 10 acres datacenter campus (1st and only in India)

No of Racks: Upto 5000

Built Up Area: 50,00,00 Sq.ft

Power Capacity: Upto 60 MW (dedicated in campus substation), through independent routes from dual substations 2N fault tolerant modular architecture providing at least 48 hours power outage protection. All major Indian ISPs inter- connecting with 100Gig each, though redundant routes terminating at dual meet me room.

Security Levels: Eight Levels Of Stringent Security Layers.

Datacenter connected to global command center (NOC & SOC) for seamless operation.

Uptime Institute Tier III Design Compliant (99.982% uptime & Build-To-Suit)

No of Racks: 83 (Expandable Capacity-200)

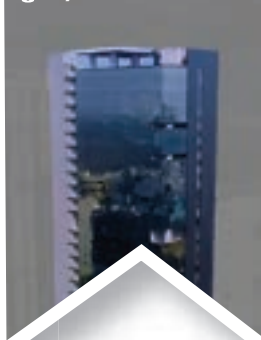
White Tile Area: 2,100 Sq. ft (Expandable Area-5000 Sq.ft)

Power Capacity: 3 MW through Independent Routes from Dual Substations. N+1 Fault-Tolerant Modular Architecture provides at least 48 hours of Power Outage Protection. Heterogeneous Multi Gig ISP interconnected through dual meet-me rooms (All major ISP operating in India). Business Continuity Bay Areas for Enterprises for Zero Operational Disruption

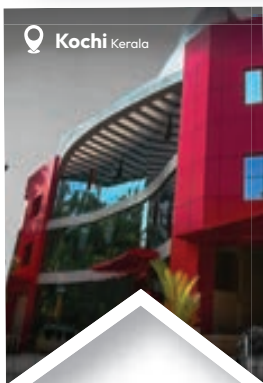
Security Levels: Four Levels of Stringent Security Layers

Datacenter connected to both local and global command centers for seamless operation.

Hyderabad Telangana



Kochi Kerala



Uptime Institute Tier III Design Compliant (99.982% uptime)

No of Racks: 200

Built Up Area: 20,000 Sq.ft

Power Capacity: 3MW through independent routes from dual substations. N+1 fault tolerant modular architecture providing at least 48 hours power outage protection. All major Indian ISPs interconnecting with 50Gig each, though redundant routes terminating at dual meet me room. Business Continuity Bay Areas for Enterprises for Zero Operational Disruption

Security Levels: Eight Levels Of Stringer Security Layers.

Datacenter connected to both local and global command centers for seamless operation.

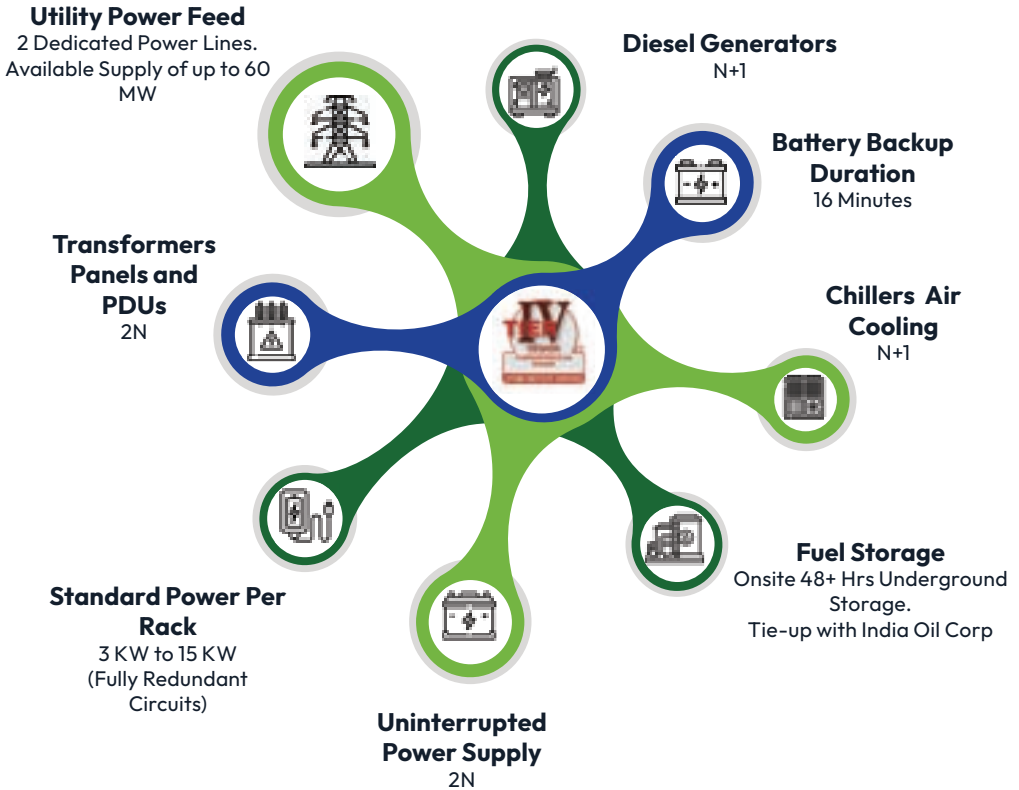
8712630334

reachus@pidatacenters.com | reachus@picloud.ai
www.pidatacenters.com | www.picloud.ai

/PIDATACENTERS
/company/PIDATACENTERS
Pi_DATACENTERS (Twitter)



Data Center Infrastructure



Pi can also project manage and build-to-suit data centers in other Indian cities, including prominent business hubs like



Hyderabad



Mumbai



Chennai



Delhi



Bangalore

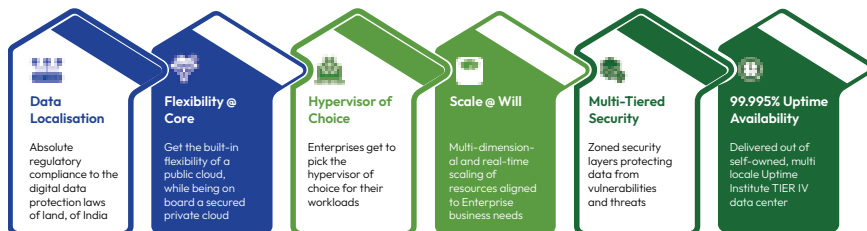


Pune



Pi Cloud Services

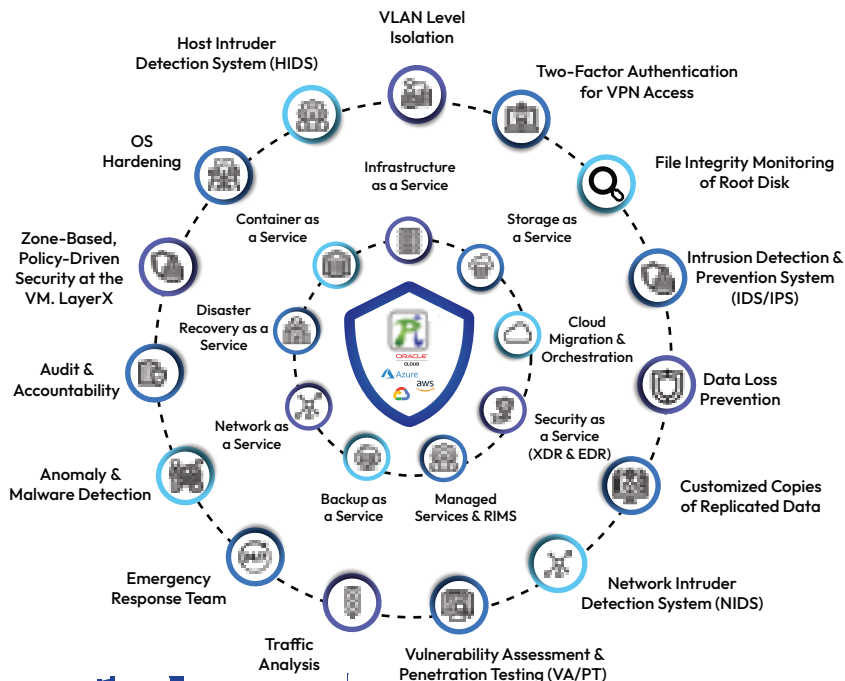
In today's dynamic digital economy, the imperative role of cloud services stands evident. As enterprises streamline their focus on core objectives and expedite time-to-market, the pivotal requirements of accessibility, flexibility, scalable capacity, agile performance, unwavering business continuity, and cost-effectiveness are seamlessly met through the embrace of cloud-native strategies.



Multi Cloud Ecosystem at Pi

Pi Datacenters extends a premium opportunity to enterprises, facilitating the seamless hosting of diverse workloads across multiple cloud providers. This strategic approach optimally leverages each provider's strengths while offsetting potential weaknesses. This multi-cloud strategy not only enhances operational agility but also broadens access to an extensive array of services and features, ensuring unmatched flexibility and scalability.

Pi's cloud computing paradigm encapsulates pivotal components, empowering our clients to thrive in the dynamic landscape of modern business operations.



8712630334

reachus@pidatacenters.com | reachus@picloud.ai

www.pidatacenters.com | www.picloud.ai

/PIDATACENTERS

/company/PIDATACENTERS

Pi_DATACENTERS (Twitter)



Key Features

Combination of Private and Public Cloud



Pi's approach to cloud computing consists of both private and public clouds, allowing clients to simultaneously leverage the flexibility of the public cloud and the robustness of the private cloud for their diverse workloads in a fully managed environment with a single pane of glass view.

Self-Service Provision



Pi's self-service provision enables customers to scale and manage their workloads via self-service, granting them complete control over their resources.

Diverse Workload Hosting Locations



Pi's platform enables customers to diversify their workload hosting locations, providing them with the flexibility and scalability necessary to succeed in today's competitive market.

Cost Optimization and Competitive Pricing



At Pi, a profound comprehension of cost optimization and competitive pricing prevails. Their dedicated approach involves close collaboration with customers, guaranteeing optimal value for investments while upholding uncompromising service quality.

Cross-Geographical Cloud Integration



They provide cross-geographical cloud integration to enable seamless workload management for their customers across various locations.

Optimal Mix of Services from Multiple Cloud Platforms

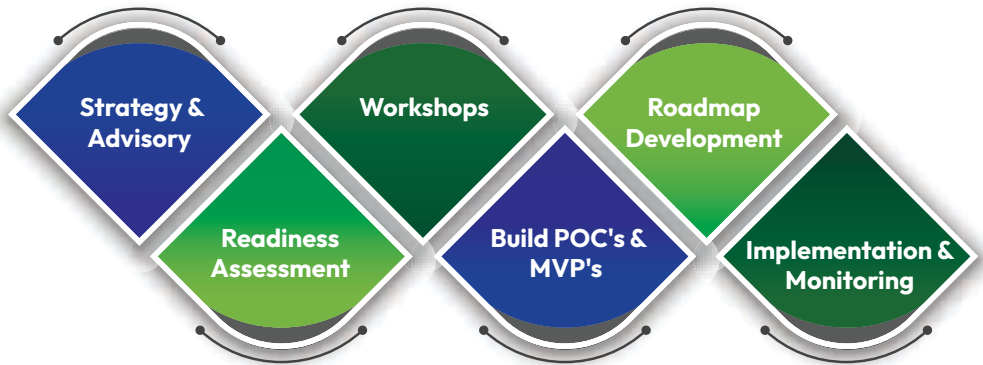


Equipped with a proficient team immersed in the latest technologies, Pi Datacenters empowers you to curate an optimal service blend from various cloud platforms. This strategic approach ensures precise alignment with your business requirements, avoiding superfluous spending while securing essential tools for success in today's digital world.



AI Services & Solutions

Pi STORM is "Your Gen AI Path Forward," tailored to meet the specific requirements of businesses, offering consulting on AI strategy and GPU strategy in building an AI Roadmap. It provides customized solutions to help businesses navigate their AI integration journey smoothly. By adopting the Pi STORM framework, businesses are equipped with thorough guidance to determine the best course of action. This involves considering factors such as resource requirements, business objectives, and technological capabilities. Through close collaboration, we ensure that businesses' AI paths are uniquely aligned with their requirements, enabling effective utilization of AI technologies for sustainable growth and success.



Why You Should Pay Attention to Pi STORM?

A dedicated team focused on

driving the successful adoption, implementation, and management of artificial intelligence (AI) technologies for you & **contribute to a more streamlined and effective adoption of AI technologies.**



reachus@pidatacenters.com | reachus@picloud.ai



www.pidatacenters.com | www.picloud.ai



8712630334



/PIDATACENTERS



/company/PIDATACENTERS



PI_DATACENTERS (Twitter)



Managed Services

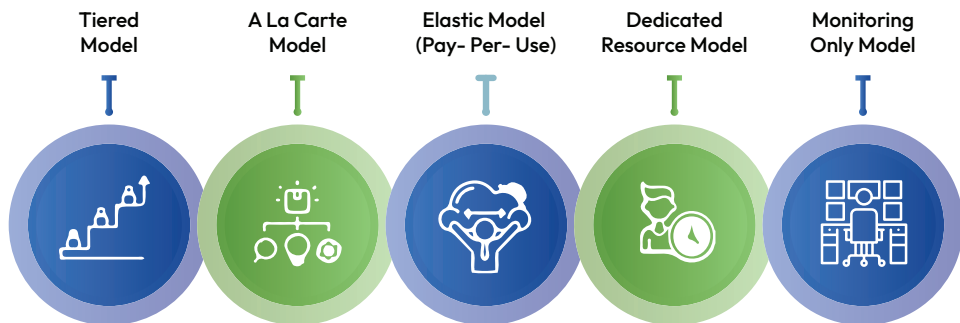
Pi Datacenters Managed Services offer varied models to cater to the unique business needs of enterprises. These include the A La Carte, Dedicated Resource, Tiered, Elastic (Pay-Per-Use), and Monitoring Only models. This is to ensure that businesses can focus on their core activities while the managed services ecosystem takes care of their smooth operations and service availability across the IT infrastructure landscape.

Managed Multi-Cloud Services

Managed Multi-Cloud Services offers businesses the flexibility to choose from multiple cloud providers, including AWS, Azure, Google Cloud, and Oracle, while ensuring seamless integration and efficient management of all cloud services.



Pi's managed multi-cloud services are designed to meet the growing demand for scalable, secure, and high-performance cloud computing solutions. Their team of cloud specialists has extensive expertise in designing, implementing, and managing multi-cloud environments, helping businesses optimize cloud infrastructure to achieve the desired outcomes.



reachus@pidatacenters.com | reachus@picloud.ai



www.pidatacenters.com | www.picloud.ai



8712630334



/PIDATACENTERS



/company/PIDATACENTERS



PI_DATACENTERS (Twitter)



Benefits of Cloud Services by Pi Datacenters:

Seamless Hybrid Cloud Integration:

Facilitate the integration of hybrid cloud environments, leveraging the strengths of both private and public clouds. This approach optimizes resource allocation, workload management, and data security while ensuring compliance.

Real-time Resource Allocation:

Provide real-time resource allocation and scaling capabilities, empowering businesses to quickly respond to changing demands and optimize resource utilization for improved operational efficiency.

Customizable SLAs:

Tailor Service Level Agreements (SLAs) to align with specific business needs. This ensures the appropriate prioritization and allocation of resources for critical applications.

Advanced Security Measures:

Employ advanced security protocols, including encryption, authentication, and intrusion detection, to ensure regulatory compliance and safeguard hosted data and applications.

Vertical-specific Solutions:

Offer tailored cloud solutions for various industries such as healthcare, finance, and e-commerce. Address unique industry needs while maintaining flexibility and scalability.

Data Sovereignty and Compliance:

Prioritize data sovereignty and compliance by offering hosting locations in strategic regions. This enables adherence to industry-specific and geographical data regulations.

AI-driven Performance Optimization:

Utilize AI and machine learning for predictive and proactive performance optimization. Enhance application performance, minimize downtime, and elevate end-user experiences.

Disaster Recovery and Business Continuity:

Deliver robust disaster recovery and business continuity solutions, ensuring application and data availability even in unforeseen circumstances. Minimize downtime and data loss risks.

Innovative DevOps Integration:

Seamlessly integrate with DevOps practices, enabling continuous integration, continuous delivery, and automated application deployment. Accelerate development cycles and enhance time-to-market.

Collaborative Ecosystem:

Foster a collaborative ecosystem by partnering with leading technology providers and offering an integrated marketplace of third-party tools and services. Enhance the cloud environment with specialized solutions.

Infrastructure & Technology Partners

